

Skin Integrity and Pressure Injury Prevention in the Elderly

Sonya Clark, RN, CWOCN, CFCN

Henry County Medical Center

Paris, Tennessee

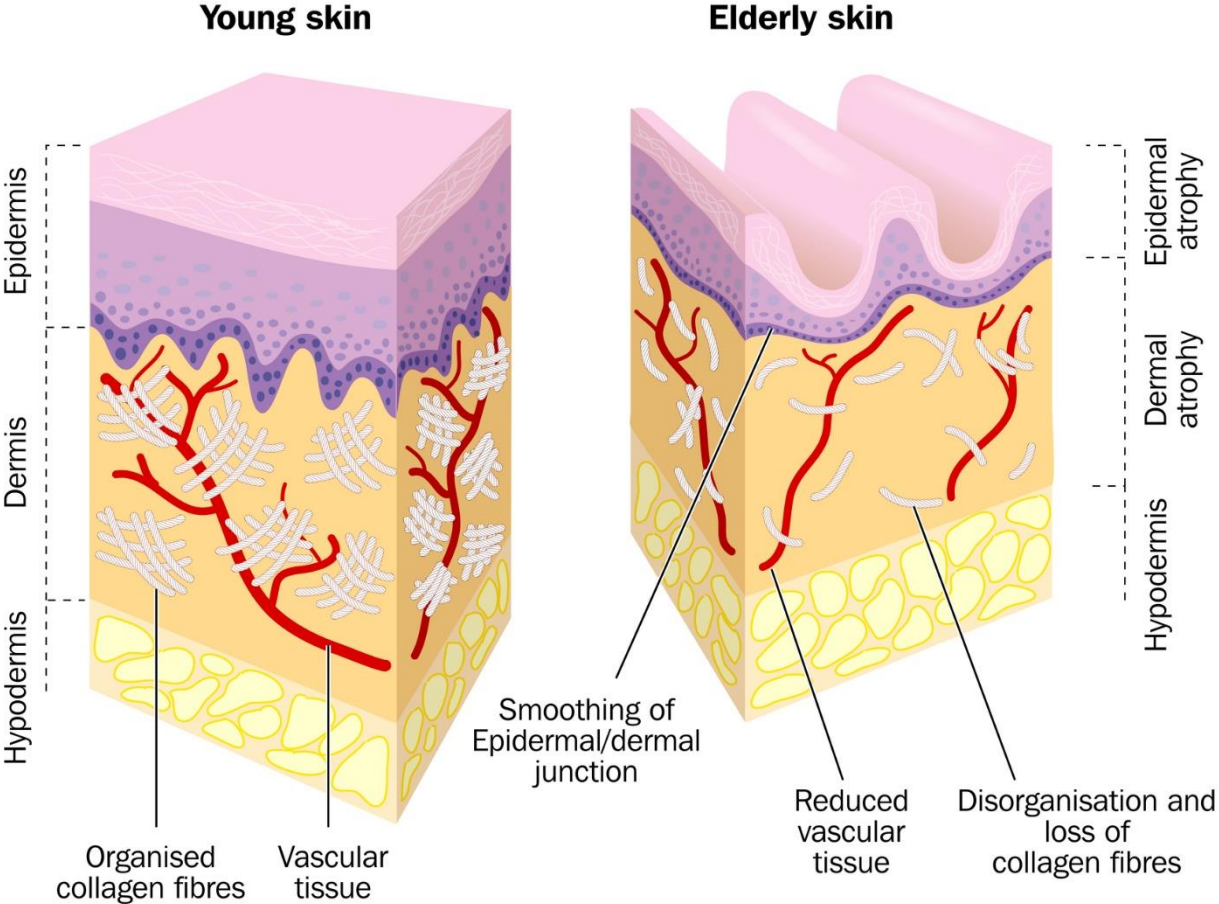
sclark@hcmc-tn.org



Objectives:

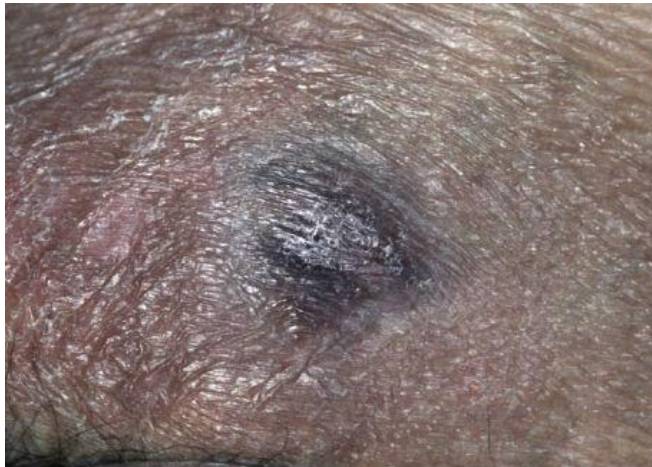
1. Identify differences in skin layers for elderly patients.
2. Identify risk factors for elderly patients.
3. Identify interventions for IAD and MASD.
4. Differentiate between DTI, KTU, and TBTTI.

Layers of Skin



Deep Tissue Injury

DTI



Location	Usually over a bony prominence
Shape	Irregular shaped
Color	Purple or maroon discoloration
Presentation	Sudden onset
Characteristics	Develops rapidly from discolored to blistering to full thickness.
Suspected time from presentation until death	Not related

<https://www.npuap.org/resources/educational-and-clinical-resources/npuap-pressure-injury-stages/>.

Kennedy's Terminal Ulcer KTU



Location	Usually on the sacrum
Shape	pear, butterfly or horseshoe, and irregular edges
Color	red, yellow, black or purple
Presentation	Sudden onset
Characteristics	Develops rapidly from discolored to blistering to full thickness.
Suspected time from presentation until death	Days to weeks

<http://www.kennedyterminalulcer.com/>

Cause

Theory that blood

Trombley Brennan Terminal Tissue Injury TBTTI



Location	May occur on any area of the body, including the trunk and LE's.
Shape	Butterfly or linear
Color	Pink, purple or maroon
Presentation	Sudden onset
Characteristics	Occurs suddenly and may appear as a bruise-like discoloration.
Suspected time from presentation until death	Hours to days